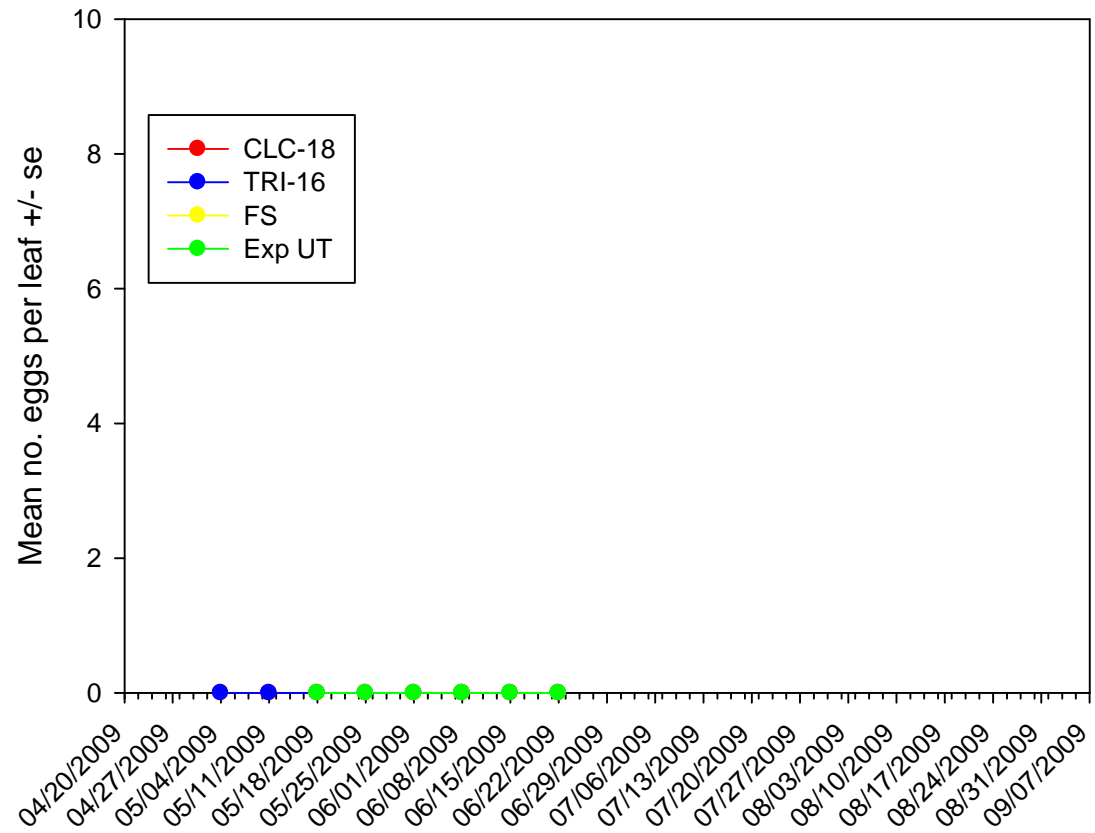
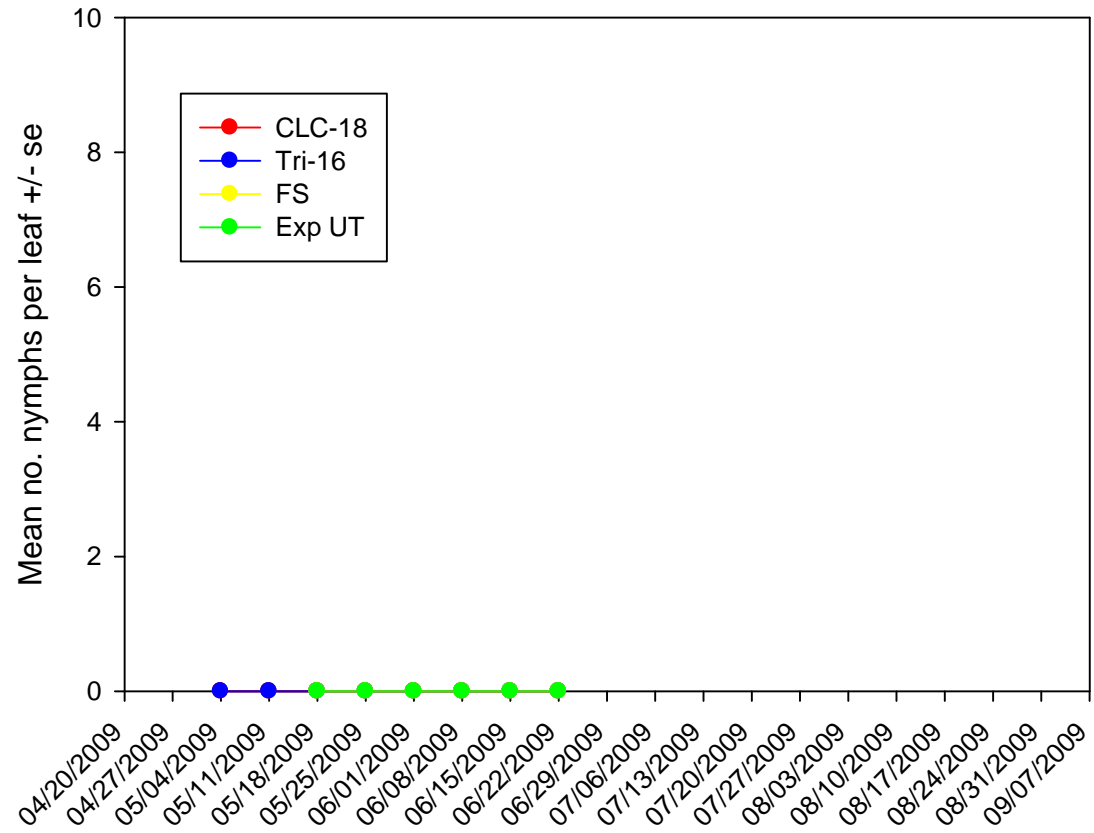


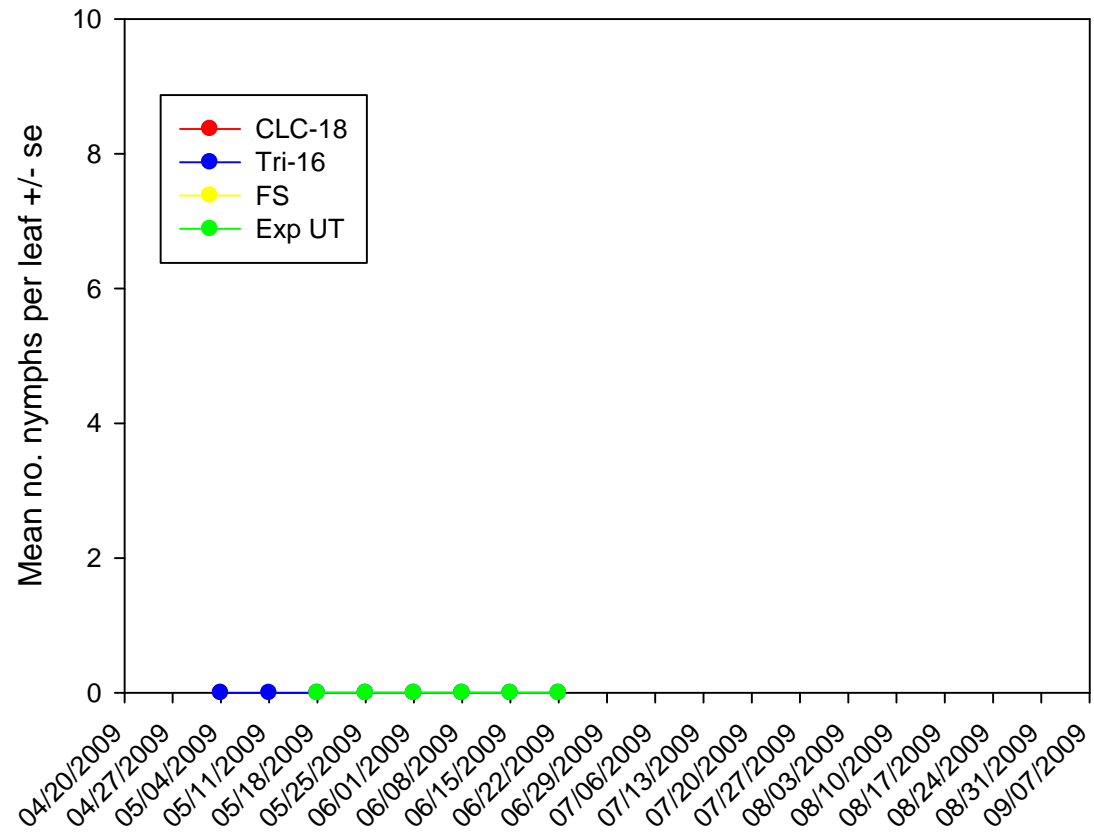
### Potato Psyllids eggs Kansas



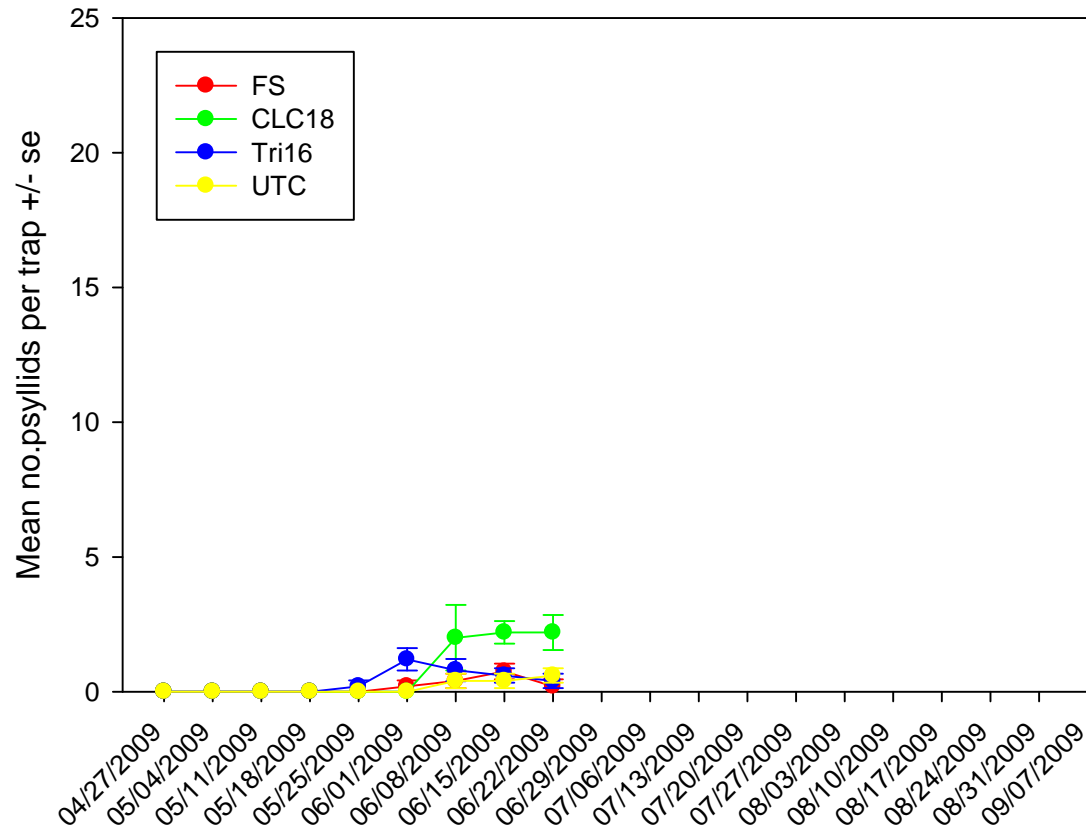
### Potato Psyllids nymphs Kansas

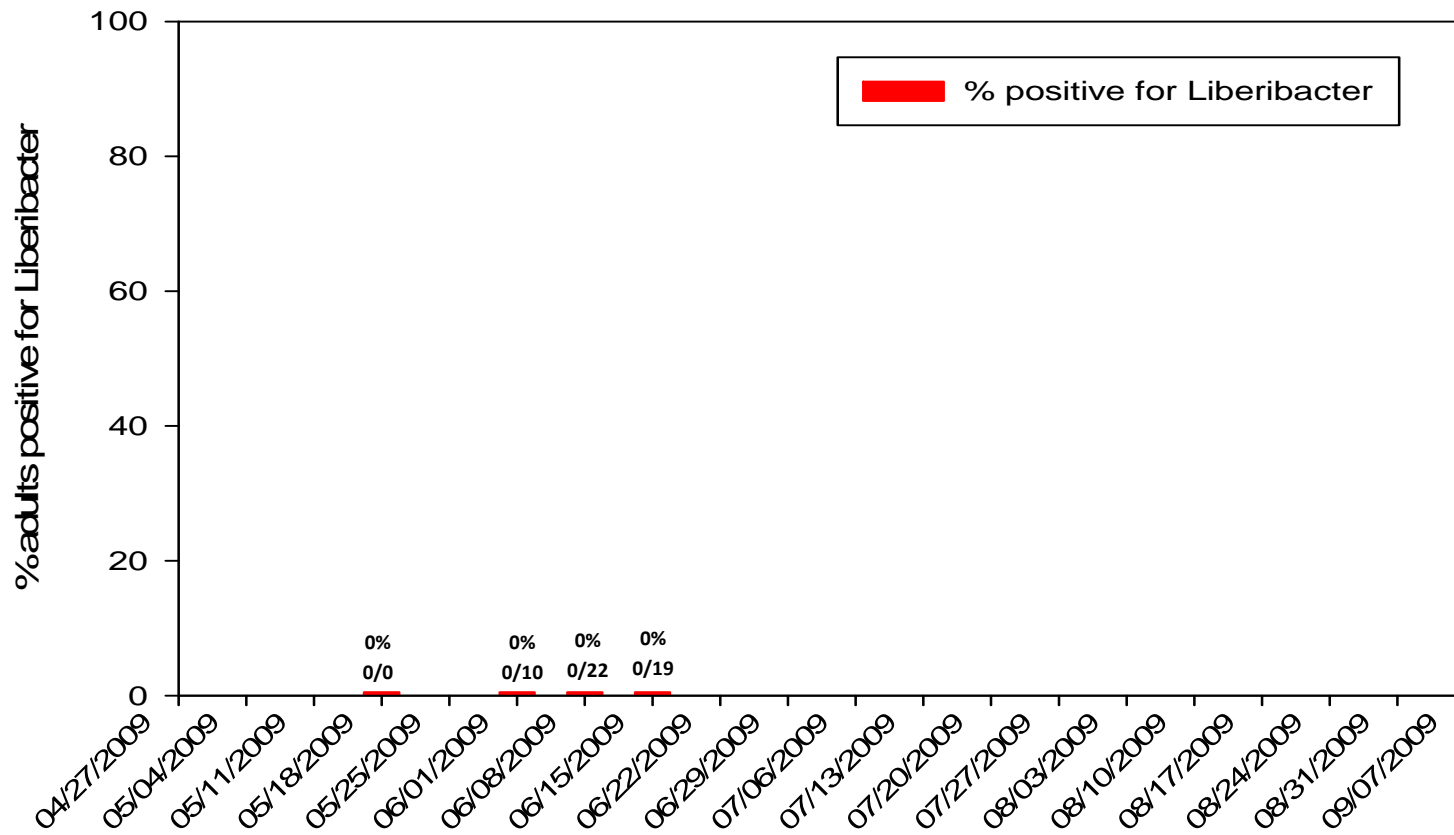


### Potato Psyllids large nymphs Kansas



### Adult Potato Psyllids on Sticky Traps Garden City, KS





**Pest Management Practices – Garden City**

UTC - Planted on the Experiment Station at 4500 E. Mary Street on April 10, 2009, Variety Atlantic.

CLC 18 – Planted on April 2, 2009. Treated with Admire Pro and Thimet. 5/22 Asana, 6/3 Asana, 6/15 Movento

Tri 16 - Planted on April 3, 2009. Treated with Admire Pro and Thimet. Variety Atlantic, 5/22 Asana, 6/3 Asana, 6/15 Movento

F5 – FL 1867 Planted on April 14, 2009. Treated with Admire Pro and Thimet., 6/1 Asana, 6/11 Movento, 6/17 Movento