

Sugarcane Rootstock Weevil

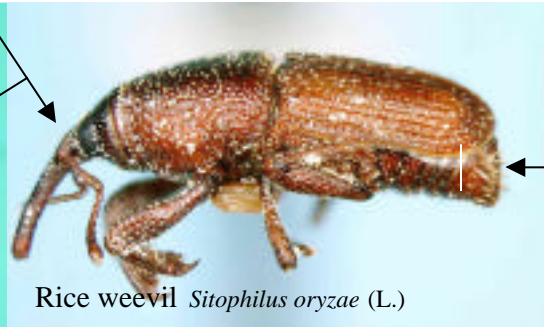
How to separate it from two common stored grain species

This weevil may be an occasional contaminant of stored grain, particularly sorghum. The adult weevil is dark brown or black and a length of three-sixteenth of inch (3-4 mm). Though it is not known to feed on harvested grain, it can (because of its similar size) be confused with grain damaging species. It can be separated from the rice weevil or granary weevil by comparing the point where the antennae attach to the beak, shape of the wing covers, and the size and shape of the abdomen beneath the wing covers at the rear of the body.

The antennae are inserted on the beak, close to the head. *Caution*, when at rest, antennae are often folded, so that the elbow may appear to be the point of insertion.

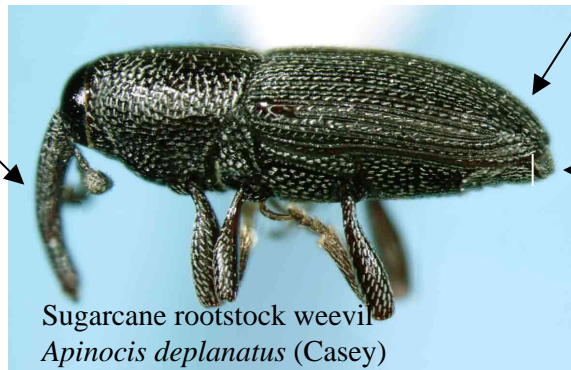


The abdomen, beneath the wing covers is large and blunt at the end (apex). Note its blunt appearance, and the depth that it extends downward below the wing covers.



Note the curvature of the wing covers as compared to the stored grain species.

The beak is slightly longer and possesses more of an angle than is true of either the rice weevil or the granary weevil



The exposed portion of abdomen, beneath the wing covers is relatively small. It is also more sharply angled at the apex compared to the stored grain species.

The antennae are inserted lower down on the beak, at a considerable distance from the head.

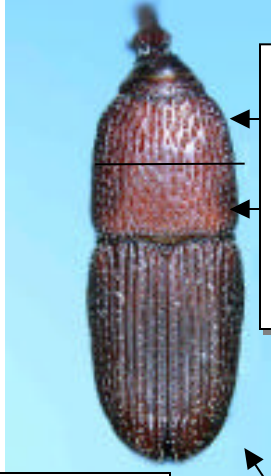


Continued
On page 2

Sugarcane Rootstock Weevil (page 2)

How to separate it from two common stored grain species

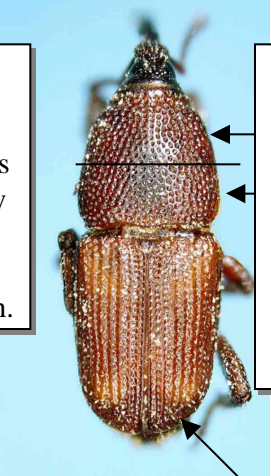
Dorsal (top) view



Front half of the pronotum is just slightly narrower than the rear portion.

Granary weevil

Wing covers nearly rectangular, tapering only slightly toward the rear



Front portion of the pronotum distinctly tapered toward the head.

Rice weevil

Wing covers nearly rectangular, tapering only slightly toward the rear



Front portion of the pronotum is as wide or wider than the rear Portion.

Sugarcane rootstock weevil

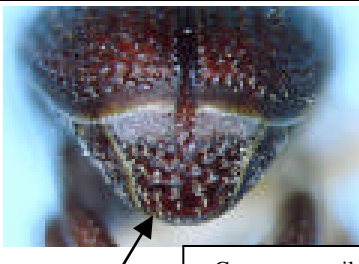
Wing covers distinctly tapered toward the rear

Posterior view. Examine the size and shape of the pygidial plate located at the end of the abdomen just below the wing covers.



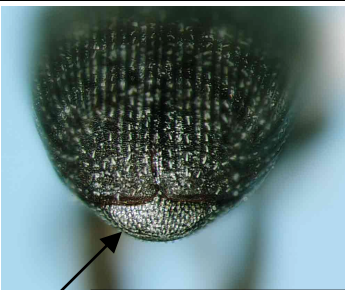
Rice weevil

Posterior pygidial plate conspicuous "spade shaped" and often covered with large pits and scales.



Granary weevil

Pygidial plate small, and semicircular in shape. The surface (visible under 20X magnification) is covered with small scale-like hairs.



Sugarcane rootstock weevil

Specimens provided by Subramanyam Bhadriraju, Grain Science, KSU, is gratefully acknowledged.
 H.L. Brooks, Bobby, Brown & Greg Zolnerowich, K-State Research & Extension, Dept. of Entomology, KSU, Manhattan, KS, 66506. 9-19-02