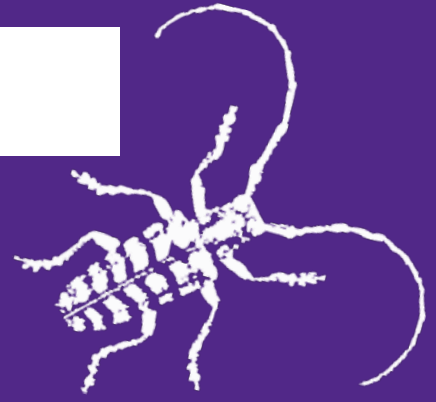


# Kansas State University Extension Entomology Newsletter

For Agribusinesses, Applicators, Consultants, Extension Personnel & Homeowners

Department of Entomology  
123 West Waters Hall  
K-State Research and Extension  
Manhattan, Kansas 66506  
785-532-6154  
<http://blogs.k-state.edu/kansasbugs/>  
<http://www.entomology.ksu.edu/extension>



September 20, 2024, No. 27

---

## News Corner

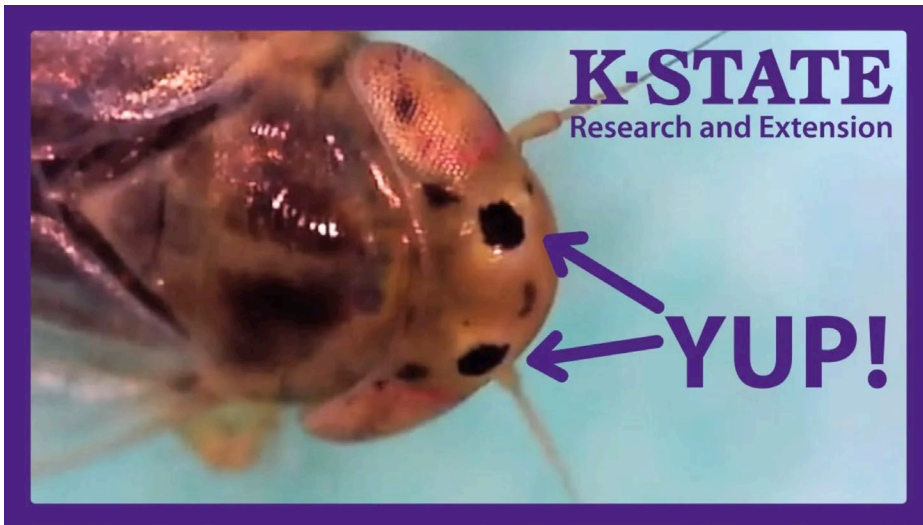
- **We Need Help Collecting Corn Leafhopper Samples**

---

## NEWS CORNER

In case you missed it in the Tuesday Letter

### We Need Help Collecting Corn Leafhopper Samples



Corn Stunt Disease caused by Corn Leafhoppers, has been identified in Kansas. So far, the disease and associated symptoms have been confirmed in Sedgwick, Pratt, Stafford, Edwards and Riley Counties. More can be found on that topic in [this article](#).

# Kansas Insect Newsletter

September 20, 2024, No. 27

---

To help entomologists better understand the CLH lifecycle, they're asking for assistance identifying possible cases of Corn Stunt Disease and collecting CLH samples. State specialists put together [this video](#) on the pest and explain how to identify and capture CLH samples.

In areas with corn that is still green:

- sweep the area using the method in the video above,
- put contents into a plastic zip lock bag,
- seal the bag,
- label the date and location with a sharpie, and
- put sealed, labeled zip lock bag into a freezer to freeze the sample.

In the December 3rd Tuesday Letter, the Department of Entomology will follow up with further instruction on having these samples processed. You can also subscribe to the [Kansas Insect Newsletter](#) for the most up-to-date sampling information.

If you have questions about CLH or need additional resources to assist with sampling, please contact Anthony Zukoff, Entomology Extension Associate at [azukoff@ksu.edu](mailto:azukoff@ksu.edu) or (620) 275 9164.

Rachel Wilkins, State Entomologist with the Kansas Department of Agriculture, is also available for CLH-related questions [Rachel.wilkins@ks.gov](mailto:Rachel.wilkins@ks.gov).

Additional resources/information on Corn Stunt Disease and CLH:

<https://eupdate.agronomy.ksu.edu/article/low-levels-of-corn-stunt-disease-have-been-confirmed-in-kansas-606-1>

---

Anthony Zukoff—Southwest Research and Extension Center – Garden City, KS

---

HOME

**Sincerely,**

Anthony Zukoff  
Extension Associate – Entomology  
Southwest Research and Extension Center  
Garden City, KS  
Phone: 620-275-9164  
e-mail: [azukoff@k-state.edu](mailto:azukoff@k-state.edu)  
@westksbugs  
[Need an insect identified? Visit the Insect Diagnostics Program Website](#)

# Kansas Insect Newsletter

September 20, 2024, No. 27

---

Visit [entomology.ksu.edu/extension](https://entomology.ksu.edu/extension) to explore our extension resources.

[What do you think about our newsletter? Send us your feedback here!](#)



Kansas State University is committed to making its services, activities and programs accessible to all participants. If you have special requirements due to a physical, vision, or hearing disability, contact the Director of Institutional Equity, Kansas State University, 103 Edwards Hall, Manhattan, KS 66506-0124, (Phone) 785-532-6220; (TTY) 785-532-4807. (For TDD, contact Michelle White-Godinet, Assistant Director of Affirmative Action, Kansas State University, 785-532-4807.)

## **Kansas State University Agricultural Experiment Station and Cooperative Extension Service**

K-State Research and Extension is an equal opportunity provider and employer. Issued in furtherance of Cooperative Extension Work, Acts of May 8 and June 30, 1914, as amended. Kansas State University, County Extension Councils, Extension Districts, and United States Department of Agriculture Cooperating, Ernie Minton, Director.